

PIVOT

When searching for lighting flexibility, look no further than our 3", 4" & 6" flat gimbal LED downlights. With powerful lumen output and the ability to direct light with a 360° rotation and a 90° tilt angle, this product will meet your every need.

FGM4-3K, FGM4-CC



FGM2-CC



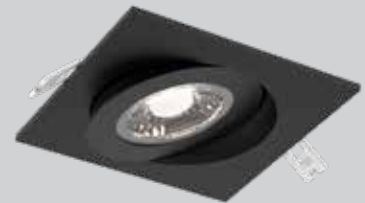
FGM3-CC

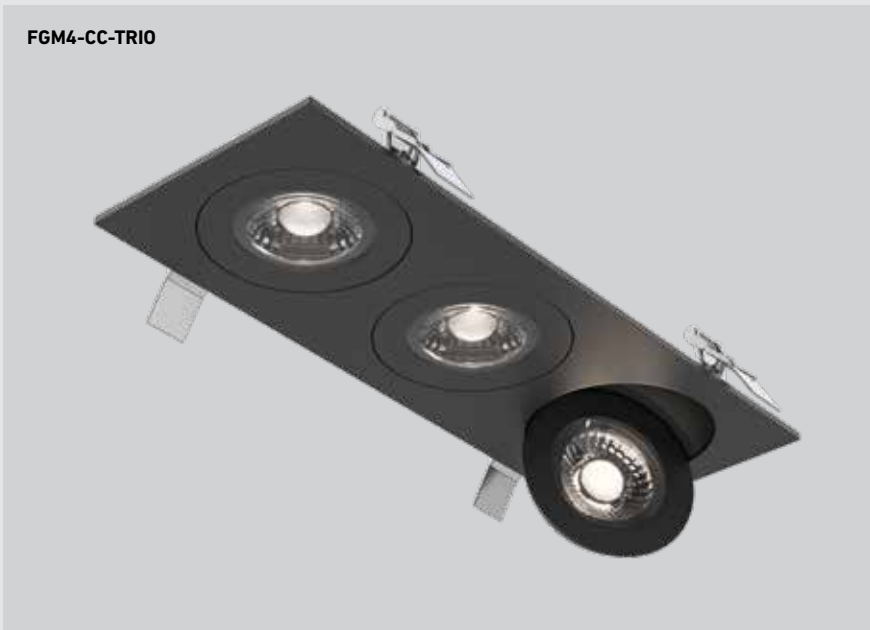


FGM6-CC



FGM4SQ-CC





*Not available for models FGM4-3K and DCP-FGM4

**Not available for models DCP-FGM4

†Model DCP-FGM4 only

PIVOT

When searching for lighting flexibility, look no further than our 4-inch square flat gimbal LED downlight. With a powerful lumen output and the ability to direct light through a 360° rotation and a 90° tilt angle, this product will meet all your lighting needs.



COLOR SELECT*



WET

90°

SWIVEL/DIRECTIONAL



AIR TIGHT

IC

RATED

T24
JA8

CERTIFIED



Intertek



Bluetooth†



CHANGE COLORS‡

Model	Size	Watts	Delivered lumens	CRI	Color °T	Voltage options ⚡
FGM4-3K	4"	9 W	740 lm	90	3000 K	120V TRIAC dimming
FGM2-CC	2"	7 W	615 lm		2700, 3000, 3500, 4000, 5000 K	or
FGM3-CC	3"	6 W	550 lm			
FGM4-CC	4"	9 W	800 lm			V: 120 / 277 / 347V 0-10V dimming (Check for availability)
FGM6-CC	6"	14 W	1155 lm			
FGM4SQ-CC	4"	9 W	800 lm			
FGM4-CC-DUO	2x 4"	18 W	1780 lm			
FGM4-CC-TRIO	3x 4"	27 W	2365 lm			
DCP-FGM4	4"	9 W	532 lm		RGB + 2700 K - 6500 K	120 V

*Not available for models FGM4-3K and DCP-FGM4

**Not available for models DCP-FGM4

†Model DCP-FGM4 only

FGM2-CC

Ø2-3/4"

**FGM3-CC**

Ø3-3/8"

**FGM4-CC, DCP-FGM4**

Ø4-1/4"

**FGM6-CC**

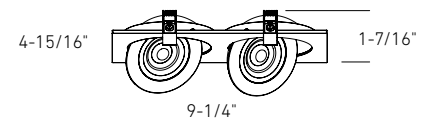
Ø6-1/4"

**FGM4SQ**

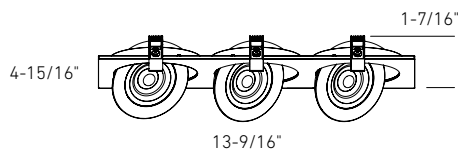
Ø4-1/4"

**FGM4-CC-DUO**

8-5/8" X 4-3/4"

**FGM4-CC-TRIO**

13" X 4-5/8"



Specifications

Every fixture includes a junction box with integrated dimmable driver
 Can be daisy chained
 90° tilting, 360° rotation
 Aluminum construction
 Switch-selectable CCT
 40° beam spread
 Full color spectrum and 2700–6500K in pure whites (DCP-FGM4 only)
 Dimmable via the DALI Connect app and the DCP-RMCT remote (DCP-FGM4 only)
 5-year warranty

Finish

- **BK** Black (except DCP-FGM4)
- **SN** Satin Nickel (FGM4, FGM6 only)
- **WH** White

Accessories

- RFP-UNI**
Universal rough-in plate
- RFP-23**
Rough-in plate for 3" model
- RFP-46**
Rough-in plate for 4" and 6" models
- RFP-DUO**
Rough-in plate for FGM4-CC-DUO
- RFP-TRIO**
Rough-in plate for FGM4-CC-TRIO
- REC-3K-EXT8FT, REC-3K-EXT20FT**
8 ft and 20 ft extension cables for 3K models
- REC-CC-EXT8FT, REC-CC-EXT20FT**
8 ft and 20 ft extension cables for CC models
- DCP-RMCT**
Smart remote for DCP-FGM4
- DCP-HUBV2**
DALI Connect Pro Hub for DCP-FGM4

Multi-voltage (V) ⚡

This product family offers multi-voltage drivers (120/277/347) that are dimmable using 0-10V dimming systems. Please note that longer lead times may apply for this option. Kindly reach out to your DALI representative for additional information and to confirm availability.

Note

Other color temperatures, finishes, and voltage options are available but may require minimum order quantities (MOQs) and longer lead times. Please contact your DALI representative for more information.